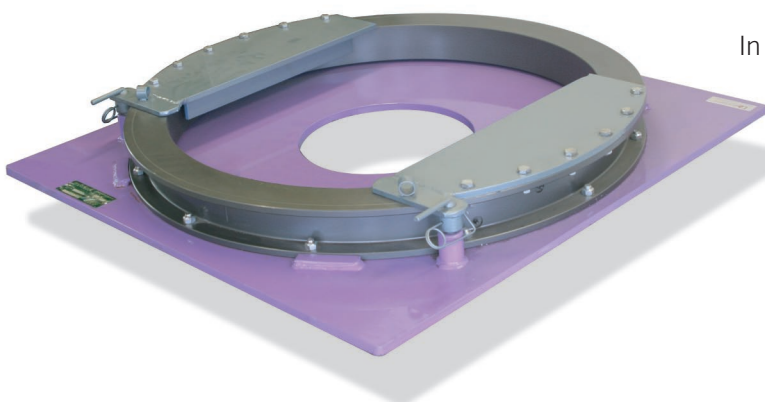


Ballrace Assemblies

Ballrace assemblies have three main advantages over fixed type assemblies: they reduce wear on all major components, they increase load stability and they improve truck handling.

Having a D'Angelo ballrace assembly reduces wear on the turntable top and skid plate, fifth wheel jaws, kingpin and tyres. The reduced drag between trailer and turntable also improves truck handling and facilitates load stability.



In a ballrace assembly the turntable is effectively locked in position relative to the trailer skid plate by a trailer block.

The cost of adding a ballrace is quickly recovered by reduced running costs and off-road maintenance time.

D'Angelo supply a range of high quality ballrace slewrings for use in these assemblies: low and high profile single row ballrace and a double row ballrace assembly. Each fifth wheel has a selection of options available to it, check each individually or call D'Angelo to discuss the options in detail.

Features

- 6t 'Z' Type (MiniMax) - 75kN
- 30t Single Row Ballrace - 190kN
- 50t Double Row Ballrace - 240kN
- 16t 'Z' Type - 190kN
- 16t Single Row (High Profile) - 190kN
- 16t Double Row - 190kN
- 30t Single Row (700mm dia.) - 190kN
- Easy maintenance through grease points

Fifth Wheel Options



Mini 50



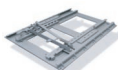
500 Series



Maxi 50



Maxi Heavy Duty



Slider Rail



Loadcell



MiniMax

Applications

Stock Crate
Semi-Tipper
Tanker
Slide-back Trailer
Low Loader
General Freight

Volume Loading
Mining
Roadtrain
Logging
B-Double

Specifications

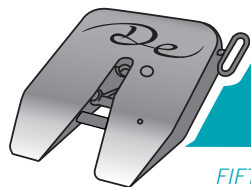
Complies with AS 1773-1990.

ADR 62/02



Maxi 50 on single row ballrace

The best ballraces in Australia!



126-132 Fitzgerald Road, Laverton North VIC 3026. Ph: +61 3 9369 0633 Fax: +61 3 9369 4717 e-mail: sales@dangelo.com.au

D'ANGELO

www.dangelo.com.au

FIFTHWHEELS • KINGPINS • BALLRACES • SLEWING BEARINGS • SLIDERAILS • 12" GREASY PLATE • TRUCK & TRAILER ACCESSORIES